

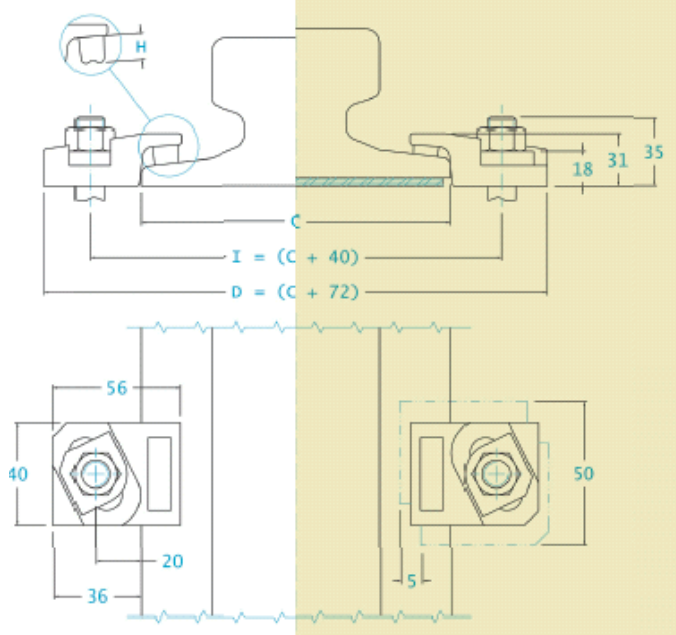
# Schienen – Klemmplatten – Unterlagen

## SERIE 2012 – Technische Spezifikation



Ohne Unterlage

Mit Unterlage



(Lieferung ohne Unterlegscheibe)

**Ausrichtmöglichkeit 5 mm**

**Seitenkraft 18 kN**

**Anzugsmoment 75 Nm**

**Für Schrauben M 12 Güte 8.8  
(nicht im Lieferumfang enthalten)**

|          | A     | B     | C     | Ohne Unterlage | Mit Unterlage |
|----------|-------|-------|-------|----------------|---------------|
|          | [mm]  | [mm]  | [mm]  |                |               |
| S10      | 32    | 70    | 58    | 2012-31-6      | 2012-31-13    |
| S14      | 38    | 80    | 70    | 2012-31-6      | 2012-31-13    |
| S18      | 43    | 93    | 82    | 2012-31-6      | 2012-31-13    |
| S20      | 44    | 100   | 82    | 2012-31-6      | 2012-31-13    |
| S24      | 53    | 115   | 90    | 2012-31-6      | 2012-31-13    |
| 25 Kg/m  | 50    | 115   | 90    | 2012-31-6      | 2012-31-13    |
| S26      | 50    | 110   | 100   | 2012-31-6      | 2012-31-13    |
| 27 Kg/m  | 50    | 120   | 95    | 2012-31-6      | 2012-31-13    |
| AFNOR 30 | 56    | 125,5 | 106   | 2012-31-6      | 2012-31-13    |
| 46 UNI   | 65    | 145   | 135   | 2012-31-10     | -----         |
| 50 UNI   | 67    | 148   | 135   | 2012-31-10     | -----         |
| S49      | 68    | 149   | 125   | 2012-31-10     | -----         |
| UIC 54   | 70    | 159   | 140   | 2012-31-10     | -----         |
| 60 UNI   | 72    | 172   | 150   | 2012-31-10     | -----         |
| A45      | 45    | 55    | 125   | 2012-31-6      | 2012-31-13    |
| A55      | 55    | 65    | 150   | 2012-31-6      | 2012-31-13    |
| A65      | 65    | 75    | 175   | 2012-31-10     | 2012-31-13    |
| A75      | 75    | 85    | 200   | 2012-31-10     | -----         |
| A100     | 100   | 95    | 200   | 2012-31-10     | -----         |
| A120     | 120   | 105   | 220   | 2012-31-13     | -----         |
| CR104    | 63,5  | 127   | 127   | 2012-31-13     | -----         |
| CR105    | 65    | 131,7 | 131,7 | 2012-31-10     | -----         |
| CR135    | 87,3  | 146   | 131,7 | 2012-31-13     | -----         |
| CR175    | 102,4 | 152,4 | 152,4 | 2012-31-13     | -----         |

| ABMESSUNGEN [mm] | E | F | G | H  | I | L | L1 | L2 | M | N | O | P | GEWICHT [Kg] |
|------------------|---|---|---|----|---|---|----|----|---|---|---|---|--------------|
| 2012-31-6        | - | - | - | 17 | - | - | -  | -  | - | - | - | - | 0,21         |
| 2012-31-10       | - | - | - | 13 | - | - | -  | -  | - | - | - | - | 0,21         |
| 2012-31-13       | - | - | - | 10 | - | - | -  | -  | - | - | - | - | 0,21         |