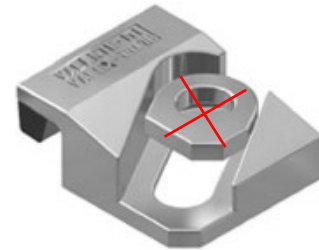
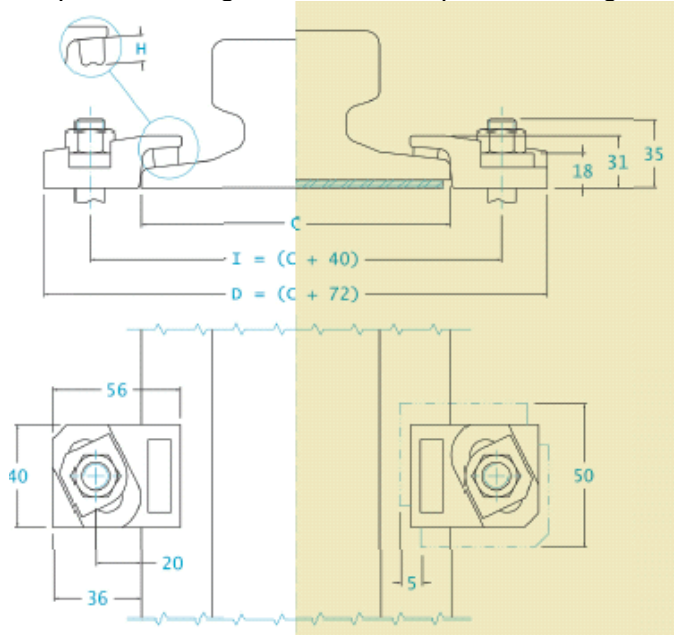


SERIES 2012 – Technical specification



Without pad mounting

With pad mounting



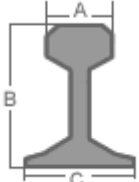
(delivery without washer for 2012 Series only)

Adjustment 5 mm

Side load 18 KN

Torque tightening 75 Nm

**For Screws M 12 Quality 8.8
(not included)**

	A [mm]	B [mm]	C [mm]	Without pad mounting	With pad mounting
S10	32	70	58	2012-31-6	2012-31-13
S14	38	80	70	2012-31-6	2012-31-13
S18	43	93	82	2012-31-6	2012-31-13
S20	44	100	82	2012-31-6	2012-31-13
S24	53	115	90	2012-31-6	2012-31-13
25 Kg/m	50	115	90	2012-31-6	2012-31-13
S26	50	110	100	2012-31-6	2012-31-13
27 Kg/m	50	120	95	2012-31-6	2012-31-13
AFNOR 30	56	125,5	106	2012-31-6	2012-31-13
46 UNI	65	145	135	2012-31-10	-----
50 UNI	67	148	135	2012-31-10	-----
S49	68	149	125	2012-31-10	-----
UIC 54	70	159	140	2012-31-10	-----
60 UNI	72	172	150	2012-31-10	-----
A45	45	55	125	2012-31-6	2012-31-13
A55	55	65	150	2012-31-6	2012-31-13
A65	65	75	175	2012-31-10	2012-31-13
A75	75	85	200	2012-31-10	-----
A100	100	95	200	2012-31-10	-----
A120	120	105	220	2012-31-13	-----
CR104	63,5	127	127	2012-31-13	-----
CR105	65	131,7	131,7	2012-31-10	-----
CR135	87,3	146	131,7	2012-31-13	-----
CR175	102,4	152,4	152,4	2012-31-13	-----

DIMENSIONS [mm]	E	F	G	H	I	L	L1	L2	M	N	O	P	WEIGHT [Kg]
2012-31-6	-	-	-	17	-	-	-	-	-	-	-	-	0,21
2012-31-10	-	-	-	13	-	-	-	-	-	-	-	-	0,21
2012-31-13	-	-	-	10	-	-	-	-	-	-	-	-	0,21