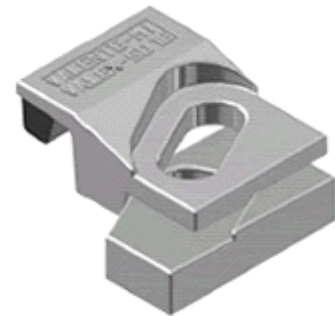
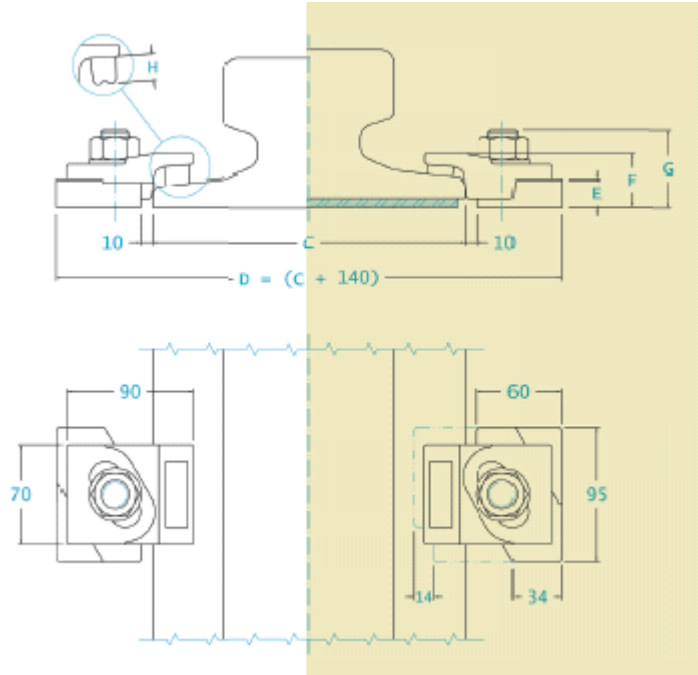


SERIES 5020 - Technical specification



Without pad mounting

With pad mounting

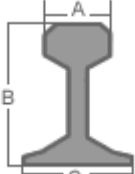


Adjustment 14 mm

Side load 75 KN

Torque tightening 320 Nm

Special Screw M 20 Quality 8.8

	A [mm]	B [mm]	C [mm]	Without Pad	With Pad
S33	58	134	105	5020-38-9	5020-38-16
50 UNI	67	148	135	5020-38-9	5020-38-16
UIC54	70	159	140	5020-38-9	5020-38-16
A65	65	75	175	5020-38-9	-----
A75	75	85	200	5020-38-9	5020-38-16
A100	100	95	200	5020-38-9	5020-38-16
A120	120	105	220	-----	5020-38-19
A150	150	150	220	5020-38-16	-----
CR104	63.5	127	127	-----	5020-38-19
CR135	87.3	146	131.7	-----	5020-38-19
CR171	109.2	152.4	152.4	5020-38-16	-----
CR175	102.4	152.4	152.4	5020-38-16	-----
MRS 87 A	101.6	152.4	152.4	5020-38-16	-----

DIMENSIONS [mm]	E	F	G	H	I	L	L1	L2	M	N	O	P	WEIGHT [Kg]
5020-38-9	20	38	54	19		-	-	-	-	-	-	-	1.325
5020-38-16	20	38	54	12		-	-	-	-	-	-	-	1.325
5020-38-19	20	38	54	9		-	-	-	-	-	-	-	1.325