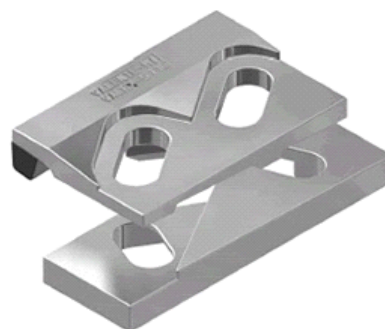
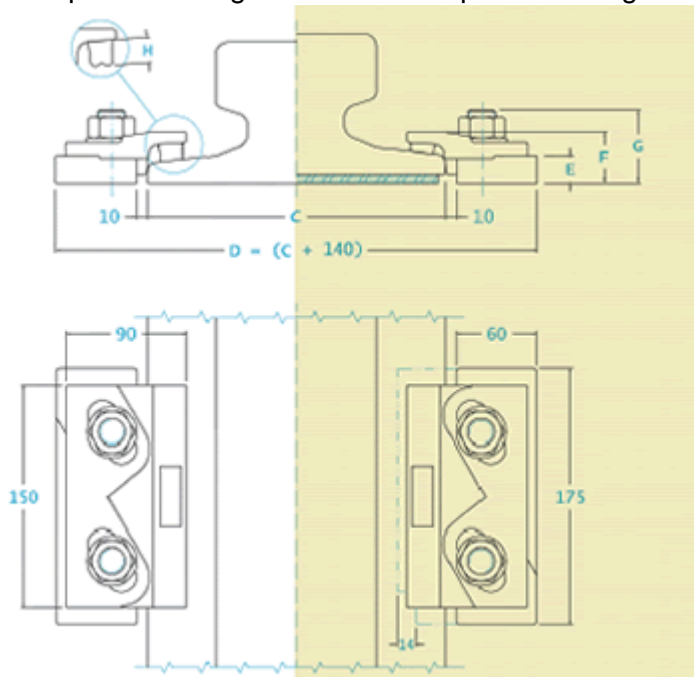


# SERIES 5120 - Technical specification



Without pad mounting

With pad mounting

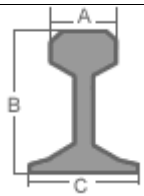


Adjustment 14 mm

Side load 200 KN

Torque tightening 320 Nm

Special Screw M 20 Quality 8.8

|  | A<br>[mm] | B<br>[mm] | C<br>[mm] | Without<br>Pad | With<br>Pad |
|---|-----------|-----------|-----------|----------------|-------------|
| S33   | 58        | 134       | 105       | 5120-39-9      | 5120-39-16  |
| 50 UNI  | 67        | 148       | 135       | 5120-39-9      | 5120-39-16  |
| UIC54   | 70        | 159       | 140       | 5120-39-9      | 5120-39-16  |
| A65   | 65        | 75        | 175       | 5120-39-9      | -----       |
| A75   | 75        | 85        | 200       | 5120-39-9      | 5120-39-16  |
| A100  | 100       | 95        | 200       | 5120-39-9      | 5120-39-16  |
| A120  | 120       | 105       | 220       | -----          | 5120-38-19  |
| A150  | 150       | 150       | 220       | 5120-39-16     | -----       |
| CR104   | 63.5      | 127       | 127       | -----          | 5120-38-19  |
| CR135   | 87.3      | 146       | 131.7     | -----          | 5120-38-19  |
| CR171   | 109.2     | 152.4     | 152.4     | 5120-39-16     | -----       |
| CR175   | 102.4     | 152.4     | 152.4     | 5120-39-16     | -----       |
| MRS 87 A  | 101.6     | 152.4     | 152.4     | 5120-39-16     | -----       |
| MRS 125   | 120       | 180       | 180       | 5120-50-20     | 5120-50-27  |

| DIMENSIONS<br>[mm] | E  | F  | G  | H  | I | L | L1 | L2 | M | N | O | P | WEIGHT<br>[Kg] |
|--------------------|----|----|----|----|---|---|----|----|---|---|---|---|----------------|
| 5120-39-9          | 20 | 39 | 54 | 19 | - | - | -  | -  | - | - | - | - | 2.650          |
| 5120-39-16         | 20 | 39 | 54 | 12 | - | - | -  | -  | - | - | - | - | 2.650          |
| 5120-39-19         | 20 | 39 | 54 | 9  | - | - | -  | -  | - | - | - | - | 2.650          |
| 5120-50-20         | 31 | 50 | 65 | 19 | - | - | -  | -  | - | - | - | - | 3.100          |
| 5120-50-27         | 31 | 50 | 65 | 12 | - | - | -  | -  | - | - | - | - | 3.100          |