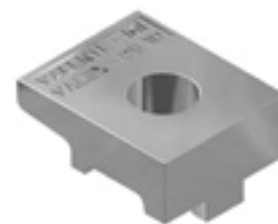
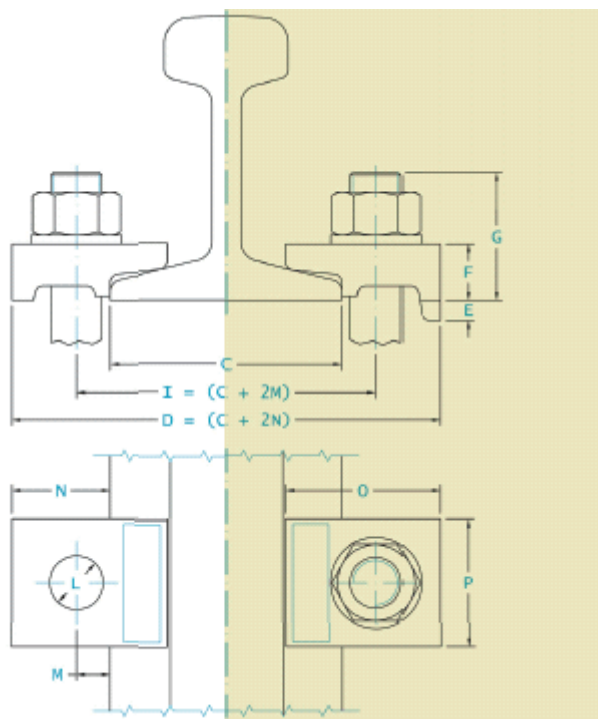


# SERIES D - Technical specification

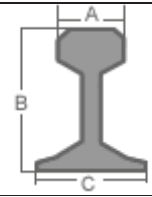


Without pad mounting

With pad mounting



	side-load	Screw	torque-tightening
D510	20 [kN]	M 12 cl. 8.8	75 [Nm]
D510M	18 [kN]	M 12 cl. 8.8	75 [Nm]
D614	35 [kN]	M 16 cl. 8.8	175 [Nm]
D614M	30 [kN]	M 16 cl. 8.8	175 [Nm]
D718	50 [kN]	M 16 cl. 8.8	175 [Nm]
D718M	45 [kN]	M 16 cl. 8.8	175 [Nm]
D820	70 [kN]	M 18 cl. 8.8	220 [Nm]
D820M	65 [kN]	M 18 cl. 8.8	220 [Nm]

	A mm	B mm	C mm	Without pad mounting	With pad mounting
S 10	32	70	58	D510	---
S 14	38	80	70	D510M 614	---
S 18	43	93	82	D614M D614	---
S 20	44	100	82	D820 D820M	---
S 24	53	115	90	D820 D820M	---
A 55	55	65	150	D820M	

DIMENSIONS [mm]	E	F	G	H	L	L1	L2	M	N	O	P	WEIGHT [Kg]
D510M	-	12	30	-	15	-	-	9	29	40	40	0.090
D510	5	12	30	-	15	-	-	9	29	40	40	0.095
D614M	-	13	35	-	18	-	-	11	34	46	44	0.110
D614	7	13	35	-	18	-	-	11	34	46	44	0.115
D718M	-	16	38	-	18	-	-	12	35	55	44	0.165
D718	7	16	38	-	18	-	-	12	35	55	44	0.170
D820M	-	20	45	-	19	-	-	12	35	55	44	0.220
D820	7	20	45	-	19	-	-	12	35	55	45	0.225