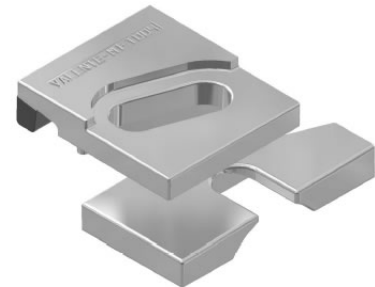
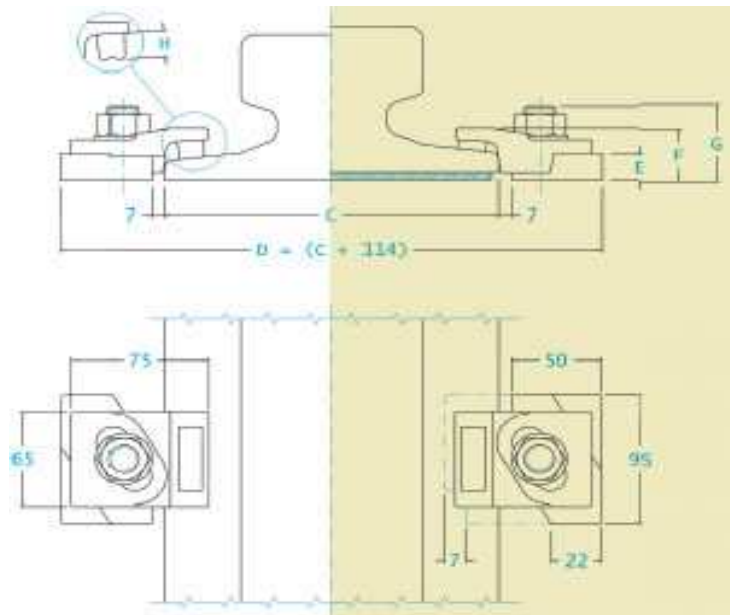


# SERIES 1004 – Technical specification



Without pad mounting

With pad mounting

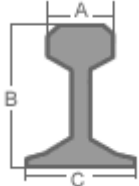


Adjustment 7 mm

Side load 60 KN

torque tightening 175 Nm

Special screw M16 Quality 8.8

|  | A<br>[mm] | B<br>[mm] | C<br>[mm] | Without pad<br>mounting | With pad<br>mounting |
|---|-----------|-----------|-----------|-------------------------|----------------------|
| S10   | 32        | 70        | 58        | -----                   | 1004-25-18           |
| S14   | 38        | 80        | 70        | -----                   | 1004-25-18           |
| S18   | 43        | 93        | 82        | -----                   | 1004-25-18           |
| S20   | 44        | 100       | 82        | -----                   | 1004-25-18           |
| S24   | 53        | 115       | 90        | -----                   | 1004-25-18           |
| 25 Kg/m   | 50        | 115       | 90        | 1004-25-14              | 1004-33-22           |
| S26   | 50        | 110       | 100       | 1004-25-14              | 1004-33-22           |
| 27 Kg/m   | 50        | 120       | 95        | 1004-25-14              | 1004-33-22           |
| AFNOR 30  | 56        | 125.5     | 106       | 1004-25-14              | 1004-33-22           |
| S33   | 58        | 134       | 105       | 1004-25-14              | 1004-33-22           |
| 36 UNI  | 60        | 130       | 100       | 1004-25-14              | 1004-33-22           |
| 46 UNI  | 65        | 145       | 135       | 1004-25-14              | 1004-33-22           |
| 50 UNI  | 67        | 148       | 135       | 1004-25-14              | 1004-33-22           |
| S49   | 68        | 149       | 125       | 1004-25-14              | 1004-33-22           |
| UIC 54  | 70        | 159       | 140       | 1004-29-18              | -----                |
| 60 UNI  | 72        | 172       | 150       | 1004-29-18              | -----                |
| A45   | 45        | 55        | 125       | 1004-25-14              | 1004-33-22           |
| A55   | 55        | 65        | 150       | 1004-25-14              | 1004-33-22           |
| A65   | 65        | 75        | 175       | 1004-25-14              | 1004-33-22           |
| A75   | 75        | 85        | 200       | 1004-29-18              | -----                |
| A100  | 100       | 95        | 200       | 1004-29-18              | -----                |
| A120  | 120       | 105       | 220       | 1004-29-18              | -----                |
| A150  | 150       | 150       | 220       | 1004-33-22              | -----                |
| CR104   | 63.5      | 127       | 127       | 1004-25-18              | -----                |
| CR105   | 65        | 131.7     | 131.7     | 1004-25-18              | -----                |
| CR135   | 87.3      | 146       | 131.7     | 1004-25-18              | -----                |
| CR171   | 109.2     | 152.4     | 152.4     | 1004-25-18              | -----                |
| CR175   | 102.4     | 152.4     | 152.4     | 1004-33-22              | -----                |
| MRS 87 A  | 101.6     | 152.4     | 152.4     | 1004-33-22              | -----                |

| DIMENSIONS<br>[mm] | E  | F  | G  | H  | I | L | L1 | L2 | M | N | O | P | WEIGHT<br>[Kg] |
|--------------------|----|----|----|----|---|---|----|----|---|---|---|---|----------------|
| 1004-25-14         | 14 | 25 | 40 | 12 | - | - | -  | -  | - | - | - | - | 0.800          |
| 1004-29-18         | 18 | 29 | 44 | 12 | - | - | -  | -  | - | - | - | - | 0.895          |
| 1004-33-22         | 22 | 33 | 48 | 12 | - | - | -  | -  | - | - | - | - | 1.000          |